



# Webb Kentrol/Sevco

Process Control / Control Valves / Instrumentation & Accessories

800.452.1928  
207.873.7741



Daryl Schoellkopf  
General Manager

Webb Kentrol/Sevco with the addition of Control Equipment of Cazenovia New York, offers a complete valve and actuation program to the entire F.W. Webb marketplace. From the simplest on-off electric of pneumatically actuated valve to the complex control valve package, our experienced staff delivers unparalleled value to our customer. Combining over 400 years of technical experience makes us your logical first choice for your automation solutions.

## DIGITAL POSITIONER

Masoneilan's SVI® II digital valve positioner provides high performance solutions for any process control application. SVI II offers advanced features and functions using the HART® Communications protocol. It is designed for use with any control valve system making it a truly universal control solution.



### Key Features

- Accuracy and precision
- Non-contact position sensor
- Modular construction



### Key Customer Benefits

- High performance valve positioning
- Scalable platform for hardware & firmware upgrades
- Auto-calibrate and auto-tune
- Non-contact hall effect position sensor
- Explosion proof LCD and push buttons
- Simple mounting for retro-fit
- Integral valve position transmitter and limit switches
- Basic and advance diagnostics
- Advanced diagnostics signatures stored in positioner
- ValVue® 2 companion software
- ValVue/AMS SNAP-ON™ application

## CAMFLEX®

*The Optimum Solution. . . In Control*



Masoneilan Operations, a leading provider of automated process control solutions, offers the Camflex®. As the original eccentric plug rotary valve, the Camflex combines top performance and features within an extremely economical design. The Camflex was designed as an optimized control "system" that offers enormous versatility and broadness of application, yet provides ideal standardization for manufacturing. It is the most widely used eccentric plug control valve in the world, satisfying a variety of control applications and acquiring a long history of successful experience. The Camflex was the first to demonstrate how top performance and features could be packaged in an economical and efficient rotary control valve architecture offering:

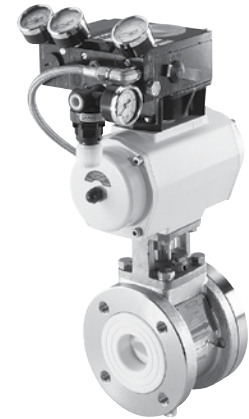
- Low life-cycle costs
- Cost effective design
- Enclosed linkages
- Modular "system" configuration
- Stellite trim
- Environmental packing
- High integrity splined shaft connection
- Broad size range from 1" through 16"



## CERAMIC BALL VALVES

Due to the advanced properties of the technical ceramics used, Fujikin Ceramic Ball Valves offer significant advantages over standard material ball valves. Fujikin valves guarantee a valve that is superior in all respects, including resistance to:

- **Corrosion.** 99.5% alumina ceramic is virtually inert to almost all organic and inorganic chemicals. They do not interact with, nor contaminate the process media. They are physically and chemically stable against most acids and alkalis, and offer years of service with little or no corrosive degradation.
- **Abrasion.** 99.5% alumina ceramic is 43% harder than zirconia, 140% harder than porcelain, and 730% harder than stainless steel, an indication of the long-term wear-resistance properties of our valve materials.
- **Cavitation.** Even severe, continuous cavitation will not degrade or damage our ceramic valve components. Therefore, the Cosmix Ball Valve may be used in cavitating or high differential-pressure applications with little or no harmful effects.
- Wide selection of trims.



# Fujikin

2-year warranty against corrosion, abrasion, and/or faulty workmanship.



800.452.1928

Call Scott, Chad, Parrish, Nate, Dan, Cynthia, Anisa or Bob with your questions.



Scott Varney  
sva@fwwebb.com



Chad Collier  
chc@fwwebb.com



Parrish Lovell  
par@fwwebb.com



Nate Grady  
nate@fwwebb.com



Dan Desilits  
ddd@fwwebb.com



Cynthia Berkovsky  
ceb@fwwebb.com



Anisa Meigs  
ani@fwwebb.com



Bob Richard  
bob.richard@fwwebb.com



**Instrumentation Services**

- Installation and Calibration
- PID Loop Tuning
- Troubleshooting
- System Start-up Support
- Commissioning Support
- Full Shut-down/Outage Assistance

**Control Panel Design and Fabrication**

- CAD Design
- UL Certification
- NEMA 12/4/4x & Class 1, Div.1
- Custom Stainless Steel Fabrication
- PLC Cabinets
- Solenoid Cabinets
- Complete Control Rooms
- Sampling Systems
- Damper Drives
- Custom Consoles

**Valve Services**

- Valve Calibration
- Valve Repair and Rebuilding
- Valve Diagnostic Surveys
- Valve Optimization Software
- Predictive Maintenance Software

**Engineered Systems**

- CAD Designed Skid Mounted Process Systems
- Metering Systems
- Filtration Systems
- Temperature Control Skids/Modules
- Utility Boiler Burner Valve Racks
- Instrument Racks
- Pump Skids

**FAIRCHILD INDUSTRIAL CONTROLS**

*Pneumatic Pressure Regulators*

Fairchild manufactures a complete line of precision pneumatic regulators including positive pressure, back pressure, and vacuum models. Quality engineering and manufacturing excellence assure that our pressure regulators meet all the requirements of a precision device including:

- Pressure accuracy
- Sensitivity
- Supply pressure immunity
- Drift-free settings
- Low output droop

*Electro-pneumatic Transducers*

The electro-pneumatic transducer was developed as a smaller, lighter, and more cost effective alternative to the M/PAn electro-pneumatic I/P/E/P/D/P and P/I transducer receives an analog or digital input control signal and converts it to a regulated pneumatic output that is directly or inversely related to the input.

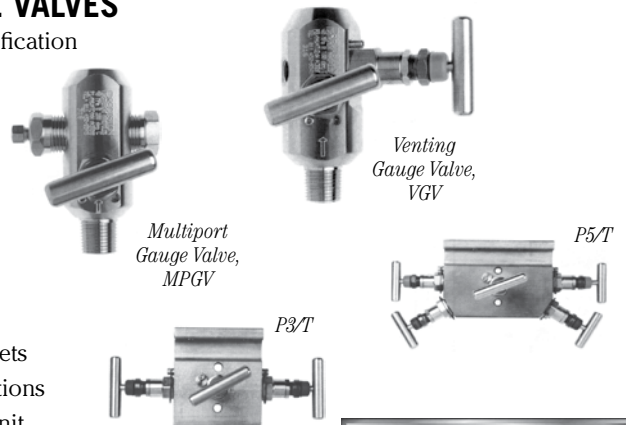
*Pneumatic Volume Boosters*

A pneumatic air volume booster reproduces a low flow control signal with a greater flow regulated output pressure. It uses an unregulated input pressure to maintain a regulated output pressure under flowing and nonflowing conditions.



**PRECISION™ GAUGE VALVES**

- Color coded dust caps for identification
- Non-rotating tip
- Oxygen service
- Integral hard & soft seats
- Anti-blow-out shaft
- Bubble tight back-seal
- 6,000 & 10,000 PSI valves
- PTFE and Graphite seals
- Pressure adjusted shaft seals
- Comprehensive mounting brackets
- Bubble tight seal on gas applications
- 100% full pressure test of each unit



DOWNLOAD our latest  
LINE CARD / OVERVIEW at:

**www.kentrol.com** or  
**sevco.fwwebb.com**





**Webb Kentrol/Sevco**

800.452.1928  
207.873.7741



*Daryl Schoellkopf  
General Manager*

Webb Kentrol/Sevco with the addition of Control Equipment of Cazenovia New York, offers a complete valve and actuation program to the entire F.W. Webb marketplace. From the simplest on-off electric of pneumatically actuated valve to the complex control valve package, our experienced staff delivers unparalleled value to our customer. Combining over 400 years of technical experience makes us your logical first choice for your automation solutions.

*Sevco Certified Pressure Relief Valve Service*

**NEWS  
RELEASE**

Enardo is pleased to announce that Kentrol / Sevco a Division of F.W. Webb Co. has joined the Enardo sales team as our exclusive representative in the New England states consisting of Massachusetts, Rhode Island, Connecticut, Maine, Vermont and New Hampshire.

Kentrol / Sevco comes to Enardo with over 40 years experience as Specialists in Automated Valves, Process Controls, Overpressure Protection and Engineered Systems. In addition to the quality product lines that they represent they are a fully certified ASME valve repair facility.

As a pioneer in Vapor Conservation and Flame Arrestor equipment for more than 70 years Enardo has supplied industry with the products, services and solutions that meet the challenges of environmental and safety standards.

We look forward to partnering with them to servicing and meeting the needs of the customers in their territory.



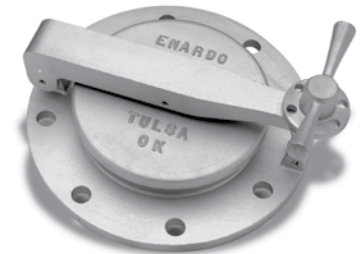
Model 950 Vent to Atmosphere Breather Vent



Series 7 Deflagration Flame Arrestor



Model 850 Pipe Away Breather Vent



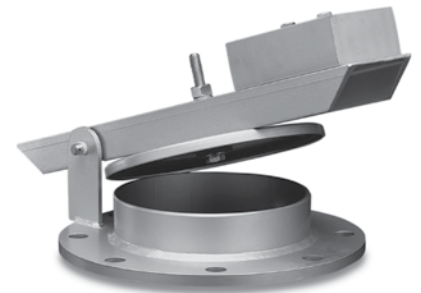
Model 1000 Lock Down Hatch



Free Vent Flame Arrestor



Detonation Flame Arrestor



Model 2000 Emergency Pressure Relief Vent

*Call Cord or Gary with  
your questions.*



After-hours  
Emergency Service:  
207.872.4779

**sevco.fwwebb.com**



Gary Thibodeau  
ggt@fwwebb.com



Cord Collier  
col@fwwebb.com

