



Daryl Schoellkopf
General Manager

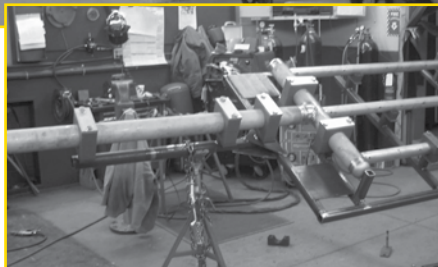
Driving to a customer account today, and listening to my "Low Fuel" alarm ring incessantly, I needed to fill up. \$60.00 later on my 15 gallon tank, I was on the road again. Where are the days of \$2.00 gas, remember when we were outraged at that?

THE ENGINEERED PRODUCTS GROUP

completed a large contract for a major Power OEM in New England. Contracted to supply an ammonia distribution piping and components, the EP Group used many innovative items to complete the job on time.



Pictured above is the 24" header with the distribution nozzles and the distribution lances.



Pictured above is one of the many jigs used in fabricating the ammonia lances.

new employee



Corey Post
post@fwwebb.com

The Engineered Products Group of Kentrol / SEVCO is please to welcome Corey Post to our team. Corey comes to us

with an extensive background in sanitary skid manufacturing. After receiving his degree from Wentworth Institute of Technology, Corey, as a Project Engineer and Project Manager, has worked with Integrated Process Technologies, Pure-Flo Cotter, Cotter Corporation and Guilford Industries. Corey will be relocating back to his roots in Maine.

Welcome aboard Corey!

SHOULD I CONSIDER A HYBRID?

Unless you have your own oil well or tank farm, every industry is feeling the effects of the higher price of fuel. In manufacturing, this translates into a higher cost to generate steam, and manufacture products. These higher costs in a competitive market often cannot be passed along to the consumer, hence a reduction in share holder value. In the generation of steam, today's average cost per 1000# of steam generated is topping \$14 for many steam producers. With that price comes a realization by many companies that conservation needs to, again, become a priority.

The obvious areas in your plant has been addressed. However, what about the steam trap in your system. This small somewhat forgotten piece of equipment, when not functioning properly can be a major source of energy and production waste. Did you know, that a steam trap with a 1/8" orifice, on an 100 psig system, can waste 43 pounds of steam per hour? Extrapolate that out over the course of a year and the waste will be 376,600 pounds. Based upon the average cost per 1000 pounds of steam, this translates to \$5,264 per year.

When was the last time your facility did an energy audit/steam trap survey? In our experience, we find that plants that do not perform maintenance on their trap systems can have a 10% or greater failure rate. In the above scenario, if you had a trap population of 100 then potentially 10 traps have failed, that energy loss could be \$52,600.

In fact in a recent survey, a 3/4" bypass valve around a steam trap station was found to be open. The customer noted that the vent line had been this way for 2 years. Immediately after closing the valve, things got back to normal and their fuel consumption noticeably dropped. Loss was estimated at \$71,600 for that time frame.

Energy cost reductions are not limited to steam traps alone. There are many programs available: water conservation, compressed air audits, electrical consumption audits, to name a few. Make sure your facility is utilizing the expertise available to prevent your "Low Fuel" alarm from costing you profits.



PROMATION ENGINEERING
Precision Actuation for Industry

Kentrol/SEVCO is pleased to announce their appointment as a distributor for Promation Engineering. This electric actuator line rounds out our offering for all forms of valve actuation. Rotary, Spring Return and Linear actuators are manufactured in the US.

● **P SERIES NON-SPRING RETURN**
300 lbs. to 31,000 lbs. Torque/ Quarter-Turn Electric Actuators



Features:

- Patented Self Locking Drive
- NEMA 4/4X cast Aluminum Alloy housing
- ISO5211 Mounting System
- Dual SPDT Auxiliary switches
- Modular Design eliminates excess wiring
- Internal Motor Thermal protection (275°F / 135°C)
- Planetary Epicyclic Gear Design
- Manual override for single-handed positioning
- Easy-to-see Raised Position indicator
- Positive Mechanical Stops in base
- Ambient Operating range -22F to +150F (-30C to +65C) with internal heater

Benefits:

- No Brake required
- Resists Environmental attack
- No bracket/coupling required for most valves - lower profile.
- Easily control motor starters and damper based on actuator position
- Allows for easy field conversion from 2 position to proportional control.
- Further Protection for the longevity of the drive motor.

● **PA-PD SERIES SPRING RETURN**
450 lbs. to 2300 lbs Torque Quarter-Turn Electric Actuators



Feature & Benefits

- Four Torque Ranges from 450"lbs to 2300"lbs....the largest torque offering in it's class
- Available in Spring CW & CCW designs with 2 position, Jog or Proportional control for 24vdc, 120vac and 230vac supplies
- Mechanical Spring Pack....Does not rely upon batteries for failsafe operation
- Full-time Manual Override Handwheel... allows manual positioning of the device during power outages
- Painless Manual Operation requires no pushing/pulling/levers for operation... simply the easiest way to provide manual control when required

● **PL SERIES LINEAR NON-SPRING RETURN**
Up to 100mm stroke (4") Up to 4400 lbs. linear Force



Feature & Benefits

- Patented Self Locking Drive
- Proportional, Jog or On/Off Control
- NEMA 4/4X cast Aluminum Alloy housing
- Easily adapts to most rising stem designs
- Dual SPDT Auxiliary switches and Internal Heater standard
- Modular Design eliminates excess wiring
- Internal Motor Thermal protection (275°F /135°C)
- Manual override for single-handed positioning
- Easy-to-see Stem Position indicator
- Ambient Operating range -22°F to +150°F (-30°C to +65°C)

Call Scott, Chad, Cynthia or Parrish with your questions.



Scott Varney
sva@fwwebb.com



Chad Collier
chc@fwwebb.com



Cynthia Berkovsky
ceb@fwwebb.com



Parrish Lovell
par@fwwebb.com

ANNOUNCING OUR APPOINTMENT AS THE EXCLUSIVE NEW ENGLAND REPRESENTATIVE FOR



Kentrol/Sevco is pleased to be aligned with this high quality manufacturer of rupture disks and accessories.

● URA SERIES

- Scoreless design offers higher cycle life when compared to scored reverse acting disks
- Single disk design covers 95% of plant requirements
- Excels in liquid, gas, or two-phase applications
- ASME UD marking available



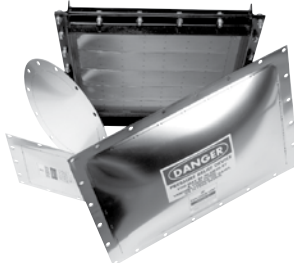
● BA SERIES

- Unique re-usable device
- Fits easily into existing piping systems
- Adapts to virtually all makes / types of rupture disks
- Installs on the outlet side of rupture disk or rupture disk holder isolating the BA from the process media



● EXPLOSION VENTS

- ZOOK Explosion vent panels are interchangeable with existing vent applications with custom sizes and materials available upon request.
- CV-F Series, CV-P Series, CV-II-F, CV-II



● ACCESSORY KIT

- Used to monitor the air gap between a rupture disk and relief valve or the presence of backpressure in a header system



● SD SANITARY RUPTURE DISK

- SD Disks are an extension of ZOOK's impervious Graphite Rupture Disk Design.
- TFE lined to prevent product build-up
- ASME UD Marking available



● URAS SANITARY

- The URAS Sanitary Disk is an extension of ZOOK's URA (Universal Reverse Acting) rupture disk design.
- Scoreless non fragmenting disk design offers higher cycle life when compared to scored reverse acting disks
- Resists product buildup. Only the smooth convex side of the disk is exposed to the process
- ASME UD Marking coming soon



● RLPS SANITARY RUPTURE DISK

- The RLPS Sanitary Disk is an extension of ZOOK's RLP (Reverse Low Pressure) rupture disk design.
- Scoreless non fragmenting disk design offers higher cycle life when compared to scored reverse acting disks
- Resists product buildup. Only the smooth convex side of the disk is exposed to the process
- ASME UD Marking coming soon



Call Cord or Gary with
your questions.

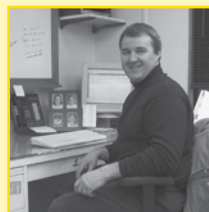


After-hours
Emergency Service:
207.872.4779

sevco.fwwebb.com



Gary Thibodeau
ggt@fwwebb.com



Cord Collier
col@fwwebb.com